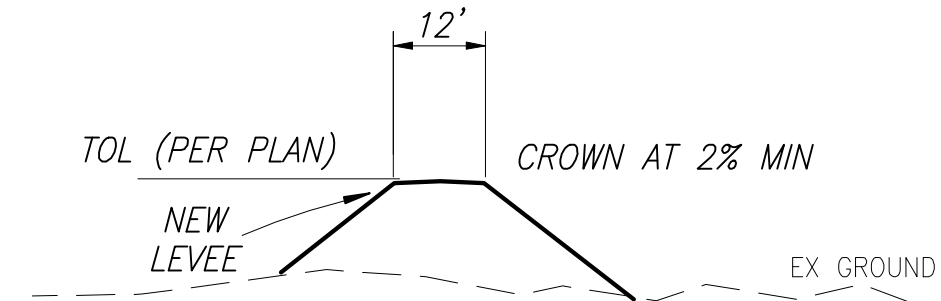


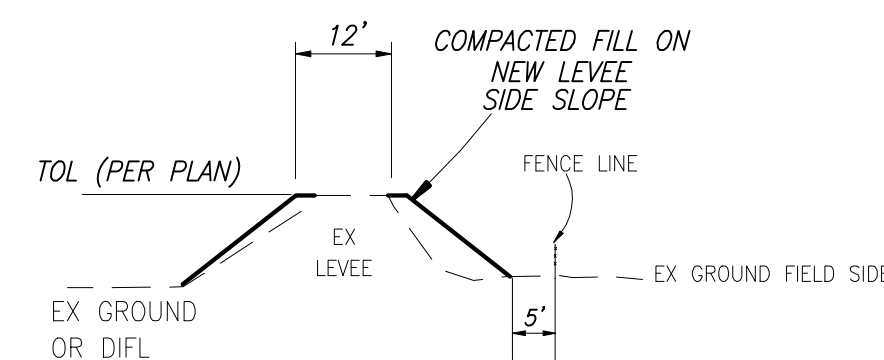
NOTE:  
LEVEE SIDE SLOPES TO BE 4:1

**A** LEVEE IMPROVEMENT  
2 NOT TO SCALE



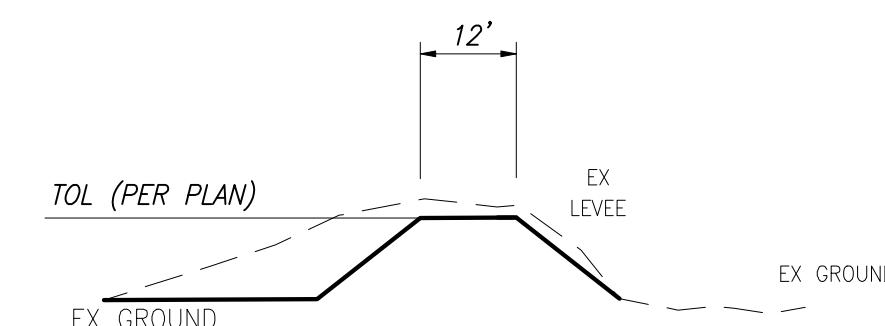
NOTE:  
LEVEE SIDE SLOPES TO BE 4:1 MIN

**B** NEW LEVEE SECTION  
2 NOT TO SCALE



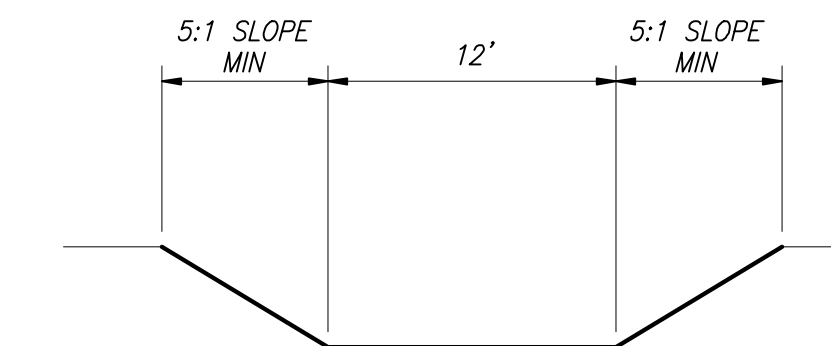
NOTE:  
LEVEE SIDE SLOPES TO BE 4:1

**C** LEVEE REGRADE  
2 NOT TO SCALE

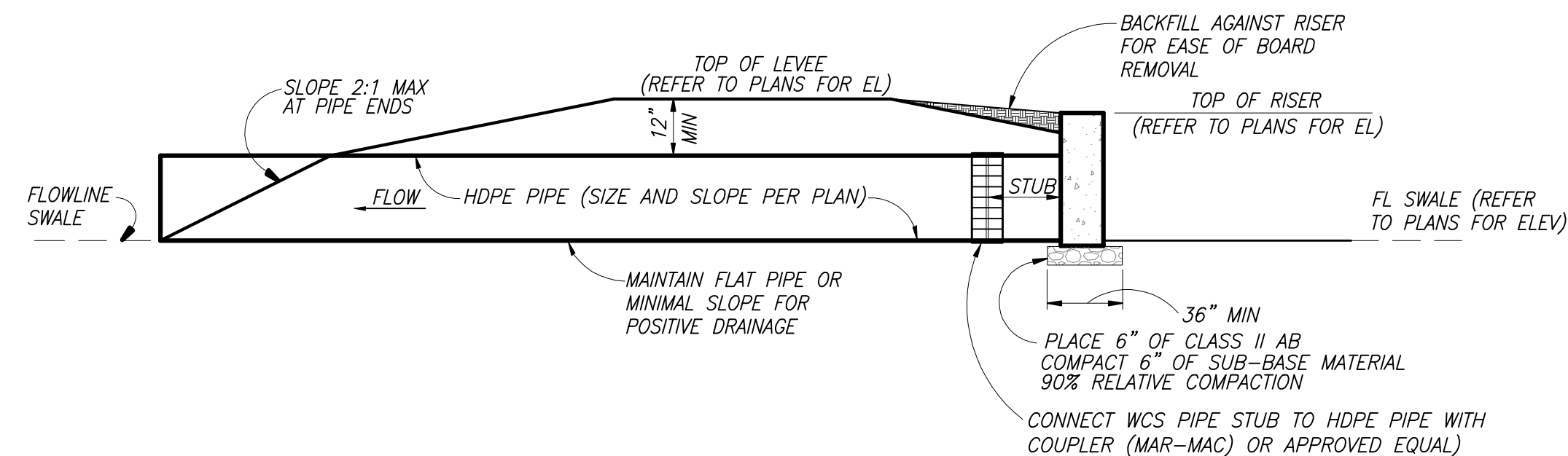


NOTE:  
LEVEE SIDE SLOPES TO BE 4:1

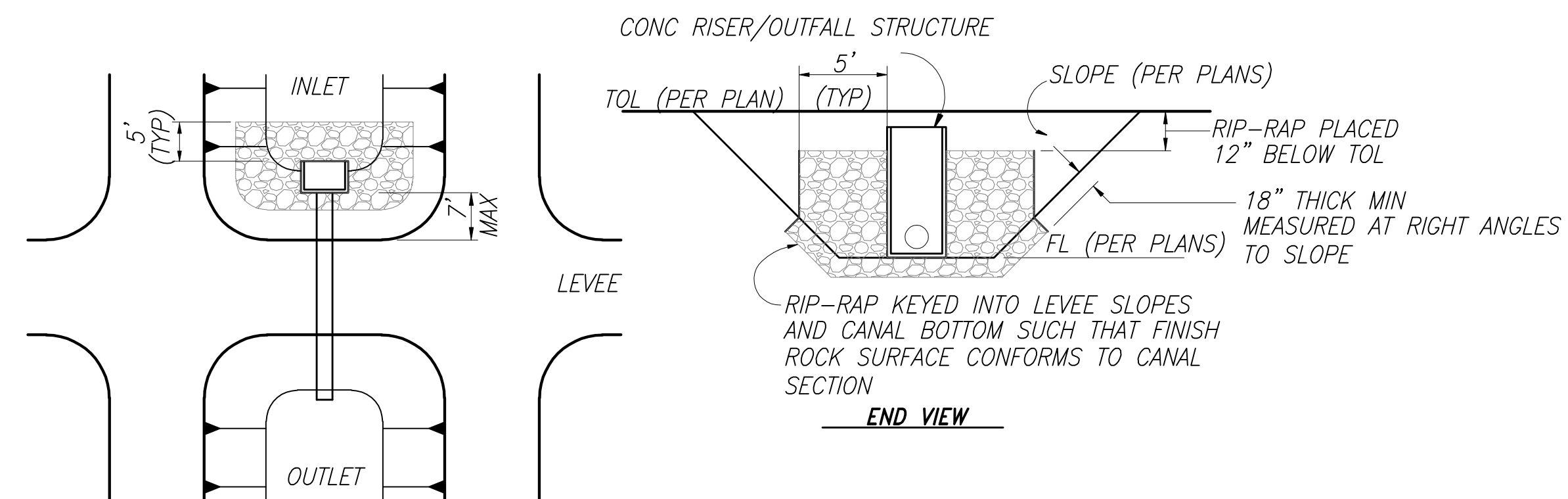
**D** LEVEE IMPROVEMENT  
2 NOT TO SCALE



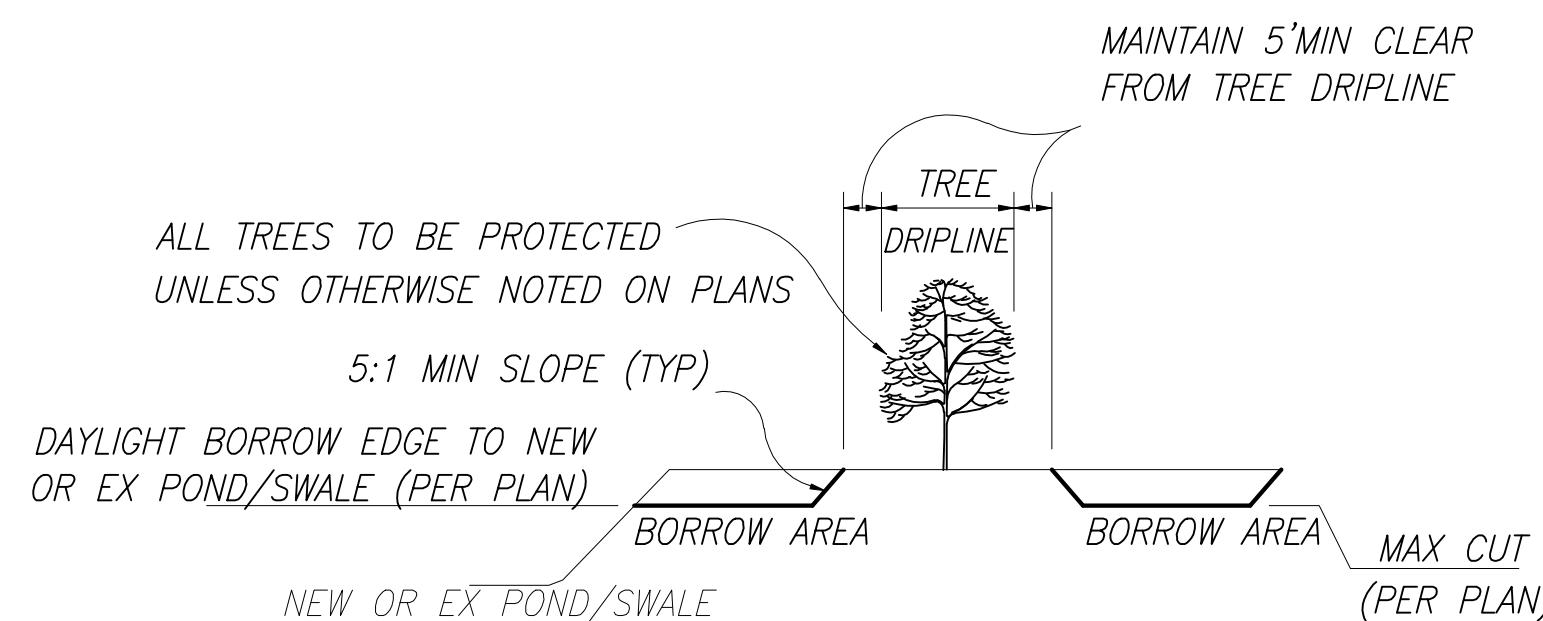
**E** TYPICAL SWALE SECTION  
-



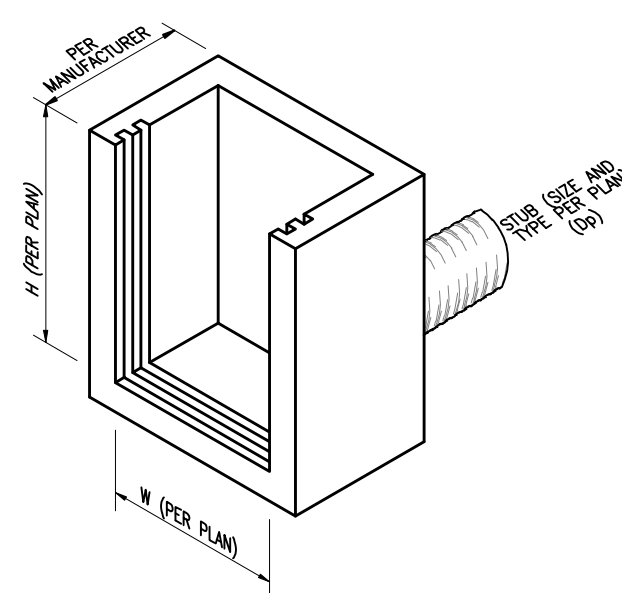
**I** TYPICAL SECTION  
WCS THROUGH LEVEE  
-



**H** TYPICAL SECTION  
RIP-RAP AT WCS  
-



**J** TYPICAL BORROW SECTION NEAR EX TREE  
-



**K** TYPICAL DETAIL PRECAST CONCRETE RISER  
SCALE

STRUCTURE NO.	PRE-CAST CONCRETE INLET STRUCTURE				CULVERT PIPE				ELEVATION DATA	
	TYPE	WIDTH (W)	HEIGHT (H)	CANAL GATES *	TYPE	DIAMETER (Dp)	LENGTH	TOP OF RISER EL	PIPE INVERT EL	
WCS01	RISER	4'	6'	YES	HDPE	30"	-	77.1	72.1	
WCS02	RISER	3'	5'	NO	HDPE	24"	-	75.2	70.8	
WCS03	RISER	3'	5'	NO	HDPE	24"	-	75.2	70.8	
WCS04	RISER	3'	4'	NO	HDPE	24"	-	75.2	71.2	
WCS05	RISER	3'	5'	NO	HDPE	24"	-	74.5	69.5	
WCS06	RISER	3'	5'	NO	HDPE	24"	-	74.5	69.5	
WCS07	RISER	3'	5'	NO	HDPE	24"	-	74.5	69.5	
WCS08	RISER	3'	3'	NO	HDPE	24"	-	72.4	69.4	
WCS09	RISER	3'	4'	NO	HDPE	24"	-	72.0	68.0	
WCS10	RISER	3'	4'	NO	HDPE	24"	-	72.0	68.0	
WCS11	RISER	3'	4'	NO	HDPE	24"	-	72.0	68.0	
WCS12	RISER	3'	4'	NO	HDPE	24"	-	72.0	68.0	
WCS13	RISER	3'	5'	NO	HDPE	24"	-	71.9	66.9	
WCS14	RISER	4'	5'	NO	HDPE	42"	-	76.8	71.8	
WCS15	RISER	4'	7'	NO	HDPE	42"	-	77.8	70.8	
WCS16	RISER	4'	5'	NO	HDPE	42"	-	74.1	69.1	
WCS17	RISER	4'	7'	NO	HDPE	42"	-	72.4	66.4	

UNAUTHORIZED CHANGES & USES  
THE ENGINEER PREPARING THESE PLANS WILL NOT BE RESPONSIBLE FOR, OR LIABLE FOR, UNAUTHORIZED CHANGES TO OR USES OF THESE PLANS. ALL CHANGES MUST BE IN WRITING AND MUST BE APPROVED BY THE PREPARER OF THESE PLANS.

SURVEY DATUM		REVISIONS			
Horizontal and Vertical Control coordinates are based on California Coordinate System Zone 2 in US feet NAD83. They were established from the WGS84 Ellipsoid with information from the Trimble 4400 receivers on September 22, 2004 from NGS monument PID = KT0359. The vertical control came from the same monument using Geoid99 in the NAVD88.		REV. NO.	DESCRIPTION	DATE	APPROVED
		1			
		2			
		3			
		4			

PERMITTING EXHIBIT	
DATE: 03.05.09	SHEET NO. 6 OF 6

**DUCKS UNLIMITED INC.**  
WESTERN REGIONAL OFFICE

PROJECT NO. CA-0462-004  
**REFUGE GUN CLUB WETLAND RESTORATION AND ENHANCEMENT**

DESIGNED BY: BCH  
DRAWN BY: JCS  
SURVEYED BY: BCH/GFC  
CHECKED BY:

APPROVED BY:

CONTOUR INTERVAL: 1 FOOT  
AERIAL PHOTO: FARM SERVICES ADMINISTRATION 2005